

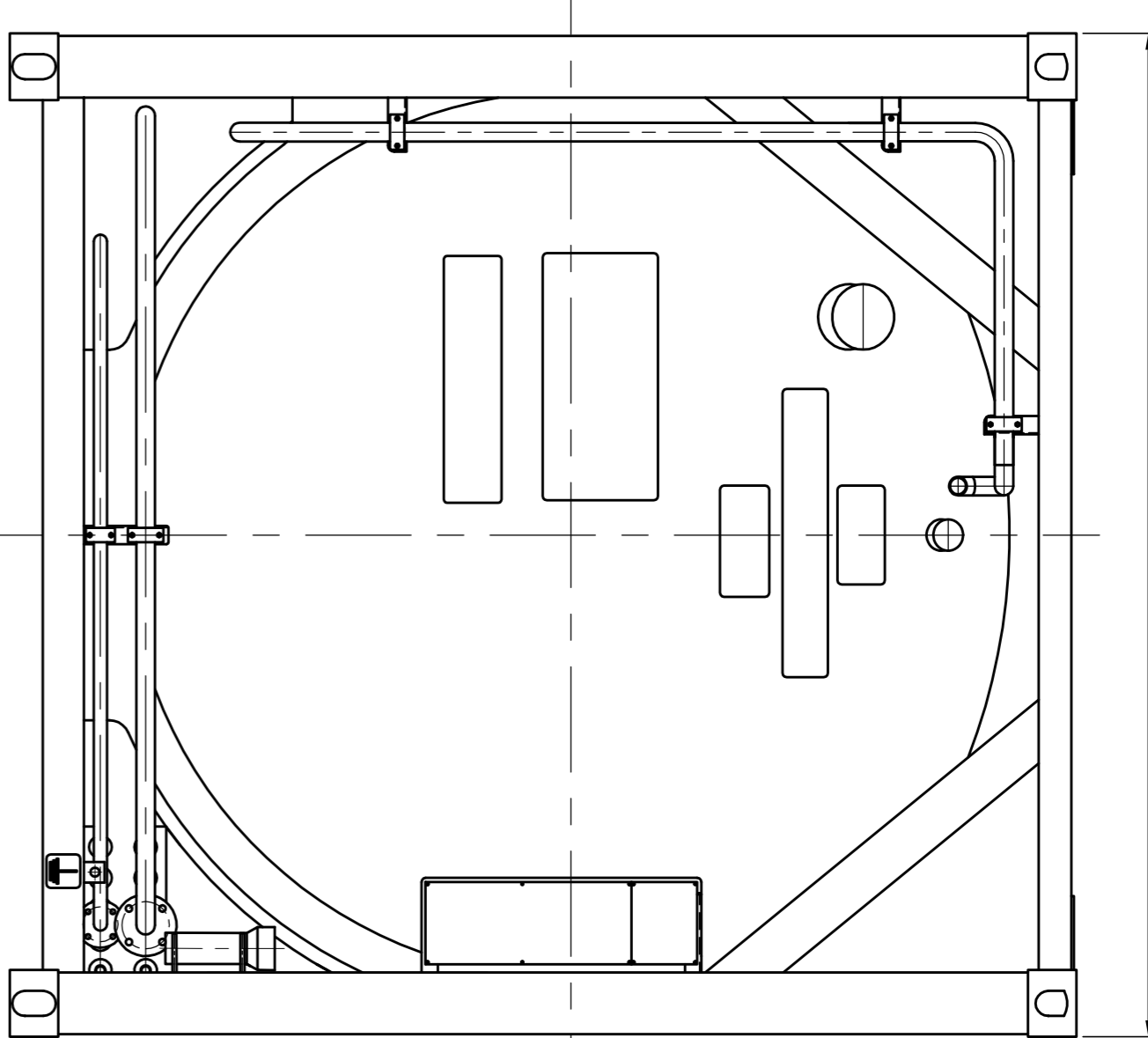
TECHNICAL DATA 技术数据表

DESIGN CODES AND REGULATIONS	ASME ■ DIV 1-2021ED T75 UN PORTABLE TANK, MOC, TR, UIC, CSC, TC, US DD (CHR49), RID/ADR, ISO 1498-3
设计标准和规范	ASME ■ DIV 1-2021ED T75 UN PORTABLE TANK, MOC, TR, UIC, CSC, TC, US DD (CHR49), RID/ADR, ISO 1498-3
T75 UN Portable Tank	罐体
TARE (kg)	8,700
罐体自重	8,700
MOCM	36,000
最大工作压力(MPa)	36,000
STACKING LOAD (kg)	-196
堆垛重量	-196
DESIGN TEMPERATURE (°C)	+50
设计温度	+50
FULL CAPACITY (m³)	21.0
容积	21.0
STATIC EVAPORATION RATE (%/d)	UN ϕ 3.4
静态蒸发率	UN ϕ 3.4
SEAL-OFF MACHINE DEGREE (°)	≤ 0.08
密封度	≤ 0.08
MATERIAL OF SHELL	SA-240M 304
壳体材料	SA-240M 304
CORROSION ALLOWANCE	0
腐蚀裕量	0
JOINT EFFICIENCY (mm)	1
接头效率	1
PRESSURE GAUGE	0~4.0 Grade 1.6
压力表	0~4.0 Grade 1.6
SET POINT OF SHUT VALVE (MPa)	2.20
安全阀设定压力(MPa)	2.20
LEAKPROOFNESS TEST	1.98
气密性试验	1.98
Filling rate of mandring rate	95% / 72.4%
灌装效率	95% / 72.4%
MATERIAL OF FRAME	Q355D(Q371591)
框架材料	Q355D(Q371591)
OUTER SIZE (L x W x H)	6058x2438x2591
外型尺寸	6058x2438x2591
PAINT AND PACKAGE	Vessel External Frame External 罐体外部涂装 框架外部涂装 White: 9/20 White: 9/20 白色: 9/20 白色: 9/20 罐体颜色要求 框架颜色要求
CONTENTS UN NUMBER	UN1073
最大充装系数	UN1073
LOX	95%
LIN	95%
LAR	93%
LO ₂	95%
LN ₂	95%

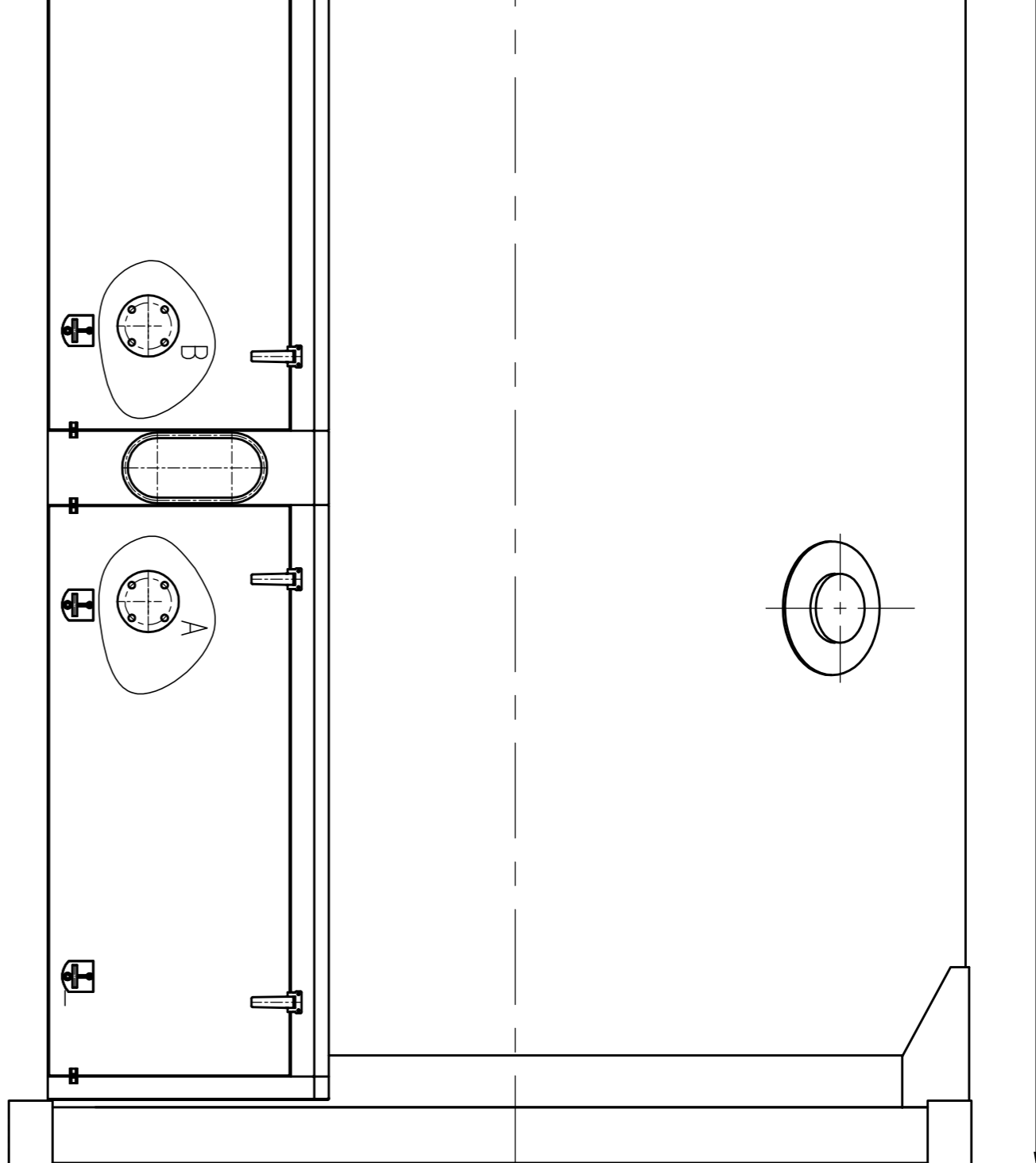
Notes:

① After the vacuum has formed, the MOC pneumatic test pressure of inner vessel shall be 2.89 MPa.
充装形成真空后, 内胆气压试验压力为 2.89 MPa。
② The painting film thickness and color can be selected by customers
油漆颜色和膜厚可由客户指定

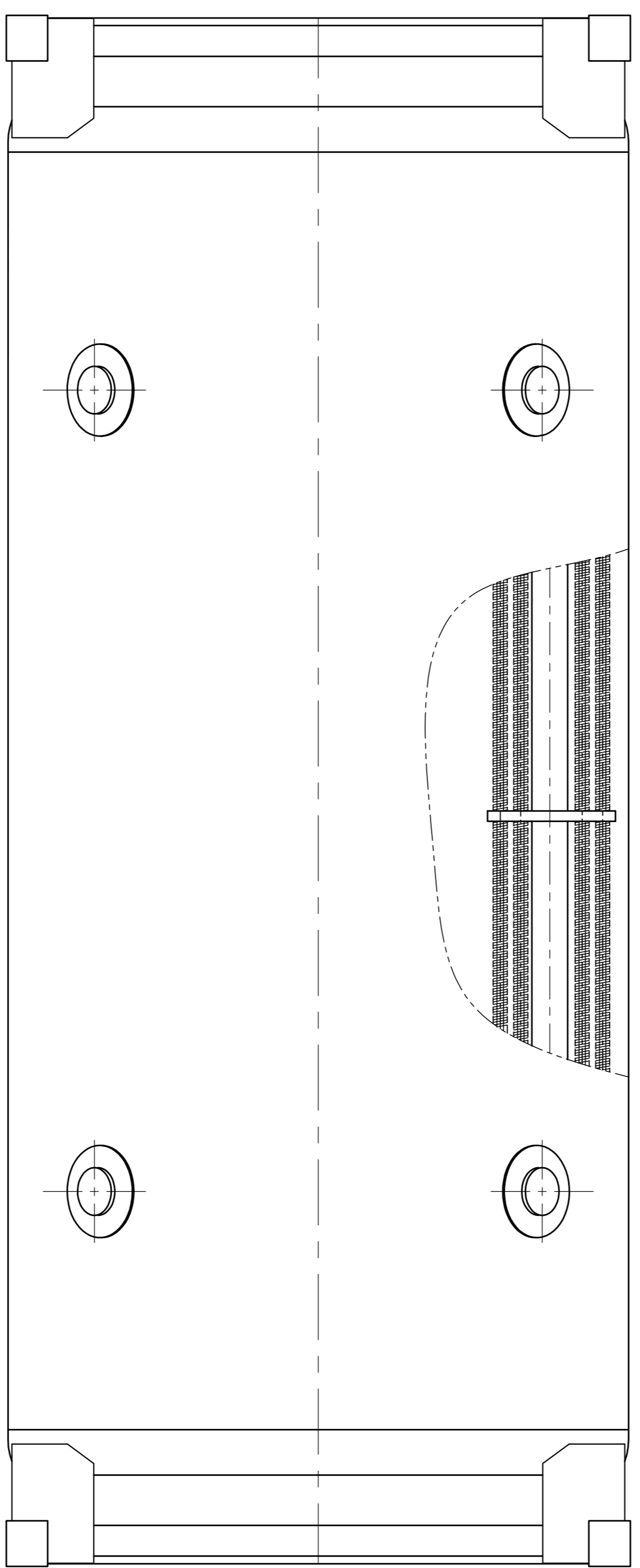
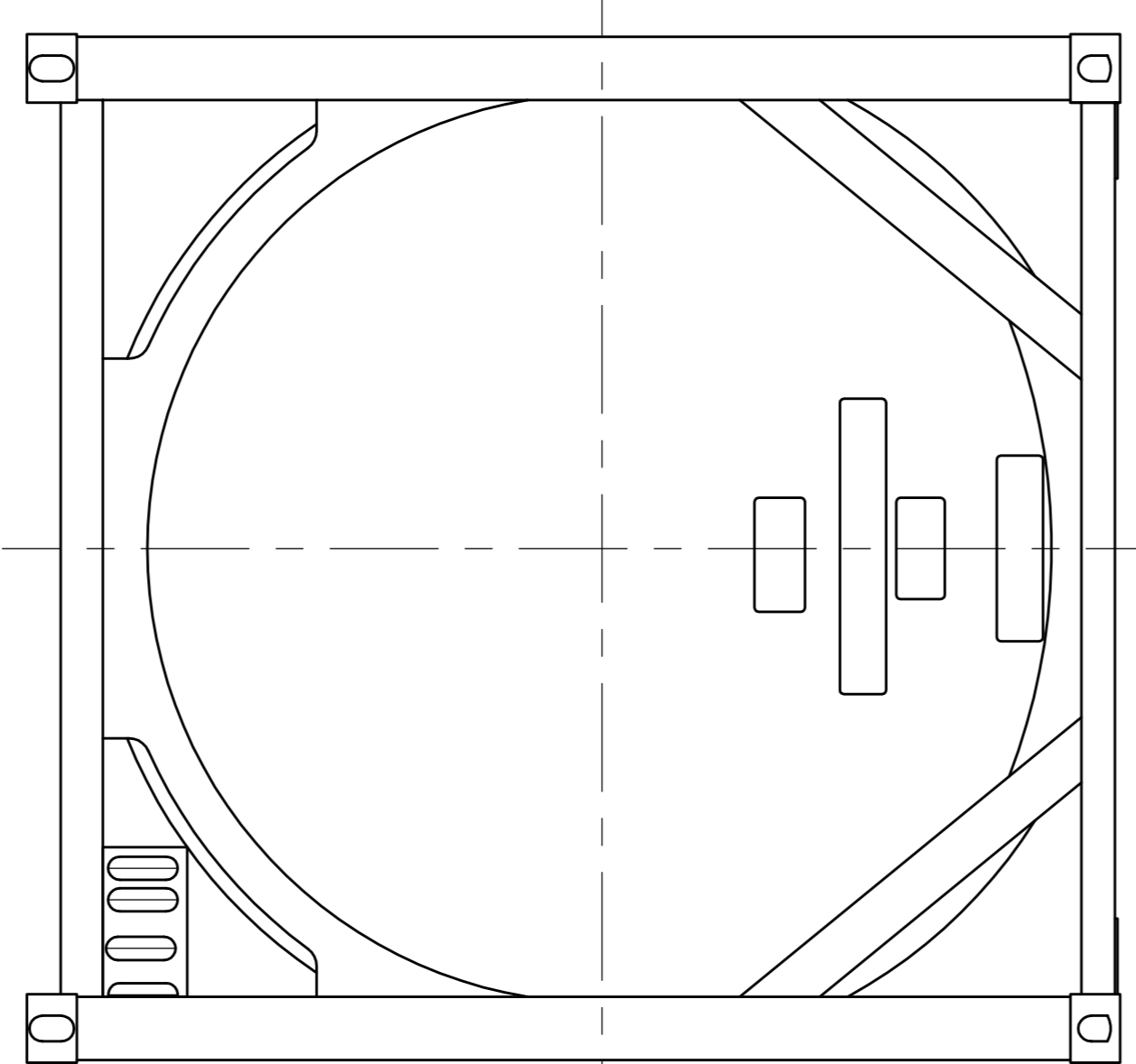
后罐视图
Rear End View
2438-5



前罐视图
Front End View
6058-6



前罐视图
Front End View



代号 ITEM	公称规格 NOMINAL SIZE	连接标准 CONNECTIONS	密封面形式 SEALING SURFACE FORM	用途或名称 NAME & SERVICE	配合尺寸 REF. SIZE	备注 REMARKS
A	DN40	Flange 1 1/2 thread connection with plug	凸凹密封	充装口	φ45x2.5	
B	DN40	Flange 1 1/2 thread connection with plug	凸凹密封	充装口	φ45x2.5	
C	DN10	Flange 1/4 thread connection with plug	凸凹密封	液相取样接口 Liquid sample connector	φ14x2	

REV	Design	Check	Review	Approval	重量 (kg)	Scale	比例
1	Design	Check	Review	Approval	8700	1:16	

Notice:
该图仅供参考, 如有变动, 请以实际出厂为准
1. This drawing is for reference only. If there is any change, please refer to the actual product.

General Assembly Drawing	罐体总图	BEIJING CHINA, RUSSIA JINQIAO INTERNATIONAL TRADING CO., LTD
Weight (kg)	8700	TCD21EB.00
Scale	1:16	
第 1 页 共 1 页 Page 1 of 1		